



Ford Ranger/Raptor Next Gen P703 2022 on Scout Roof Rack

IMPORTANT! – READ BEFORE INSTALLATION

- Rated to 95kg driving and 190kg sitting still- Rack weight is 15kg- Offroad Rating is 63kg so minus the 15kg rack means you're allowed to put 48kg up there
- This product must be installed exactly as per these instructions using only hardware supplied.
- Take a few moments to read instructions thoroughly before beginning work.
- In the event of damage to any bar component please contact OFFROAD ANIMAL to arrange repair/replacement of components.
- Do not use this product for any vehicle make or model other than that specified on these instructions.
- Do not remove labels from this product.
- This product and its fixings must not be modified in any way unless stated in these fitting instructions.
- The installation of this product is recommended for trained personnel.
- These instructions are correct at time of publication. OFFROAD ANIMAL cannot be held responsible for the impact of any changes subsequently made by the vehicle manufacturer. If you find something has changed, please contact us to let us know!
- During installation it is the duty of the installer to check correct operation/clearances of all components.
- If Instructions are to be printed for reference in the workshop, it is recommended that they are printed in colour, for best legibility.

We have a very detailed YouTube video showing how to do this entire procedure, which can be found here: https://youtu.be/GQC-jWNTH_o



GENERAL CARE AND MAINTENANCE

Only wash the product with a PH neutral car wash to prevent paint damage and discolouration.

Plastic parts may be maintained with silicone spray.

Do not use acidic or alkaline based cleaning products.

It is important to perform regular checks (pre trip or on an annual basis) on the installed product. Checks include:

- Visual inspection for damage (eg. cracks, chips, dents etc.)
- Electrical wiring is not rubbing anything or worn out
- Bolts are torqued to correct specification (see torque guide below)

For touching up small stone chips, Offroad Animal recommends the following paint products:

- Dupli-Color Trim & Bumper Paint Black (TB101)
- VHT Hood, Bumper & Trim Paint Black (SP27)

BOLT TORQUE SETTINGS

Use the following bolt torques on all fasteners, unless otherwise specified.

Always use a torque wrench to set correct torque settings. Ensure torque wrench is set to Nm unit of measurement. Otherwise perform conversion to lb-ft.

Size	Torque Nm
M5	5 Nm
M6	9 Nm
M8	22 Nm
M10	44 Nm
M12	77 Nm



PARTS LISTING

IMPORTANT: Check all parts are present before beginning work! Contact OFFROAD ANIMAL if something is missing.

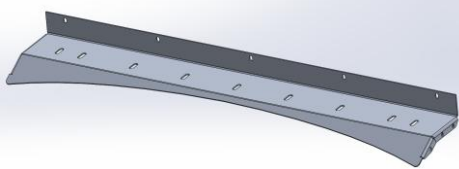

Main Parts – In the Box

Qty	Part Number	Description	Image
5	E-0006 - 1200	Scout Roof Rack – Cross Bar Extrusion 1200MM	
1	B-0769L	Roof Rack Side Rail - Ranger	
1	B-0769R	Roof Rack Side Rail - Ranger	
1	B-0808	Roof Rack No Light Wind Deflector - Ranger	
1	B-0770L	Next Gen Front Pad LH	
1	B-0770R	Next Gen Front Pad RH	
1	B-0771L	Next Gen Rear Pad LH	



1	B-0771R	Next Gen Rear Pad RH	
----------	---------	----------------------	--

Optional Light Bar Kit – Purchased Separately

Qty	Part Number	Description	Image
1	B-0809	Roof Rack Light Bar Wind Deflector - Ranger	
5	M8 X 12 BHCS BZP	SCREW, BUTTON HEAD CAP, M8X12X1.25 GR12.9 BLACK ZP	

Small Parts – Contained in Small Parts Kit Bag

QTY.	PART NO.	DESCRIPTION
31	M8 X 16 BHCS BZP	SCREW, BUTTON HEAD CAP, M8X16X1.25 GR12.9 BLACK ZP
11	M8 X 12 BHCS BZP	SCREW, BUTTON HEAD CAP, M8X12X1.25 GR12.9 BLACK ZP
6	M8 x 20 BHCS BZP	SCREW, BUTTON HEAD CAP, M8X20X1.25 GR 12.9 BLACK ZP
7	M6 FLANGE NUT	Flange Nut, M6x1 G8.8 ZP
8	M6 FLAT WASHER BLACK ZINC	M6 FW BLACK ZP
7	M6x25 BHCS BLACK ZINC	SCREW, BUTTON HEAD CAP, M6X20X1 GR12.9 BLACK ZP
20	M8 Nut	Hex Nut, M8x1.25 G8.8 ZP
48	M8 FLAT WASHER- BLACK ZINC	M8 FW- BLACK ZINC
6	M8 FN	M8 Flange Nut
4	M10 x 25	Hex Bolt, M10 x 25, zp gr 8.8
8	M10 FW	Flat Washer, M10
4	M10 NY	Nyloc Nut, M10
2	OFA-LOGO	OFFROAD ANIMAL METAL LOGO




TOOLS REQUIRED

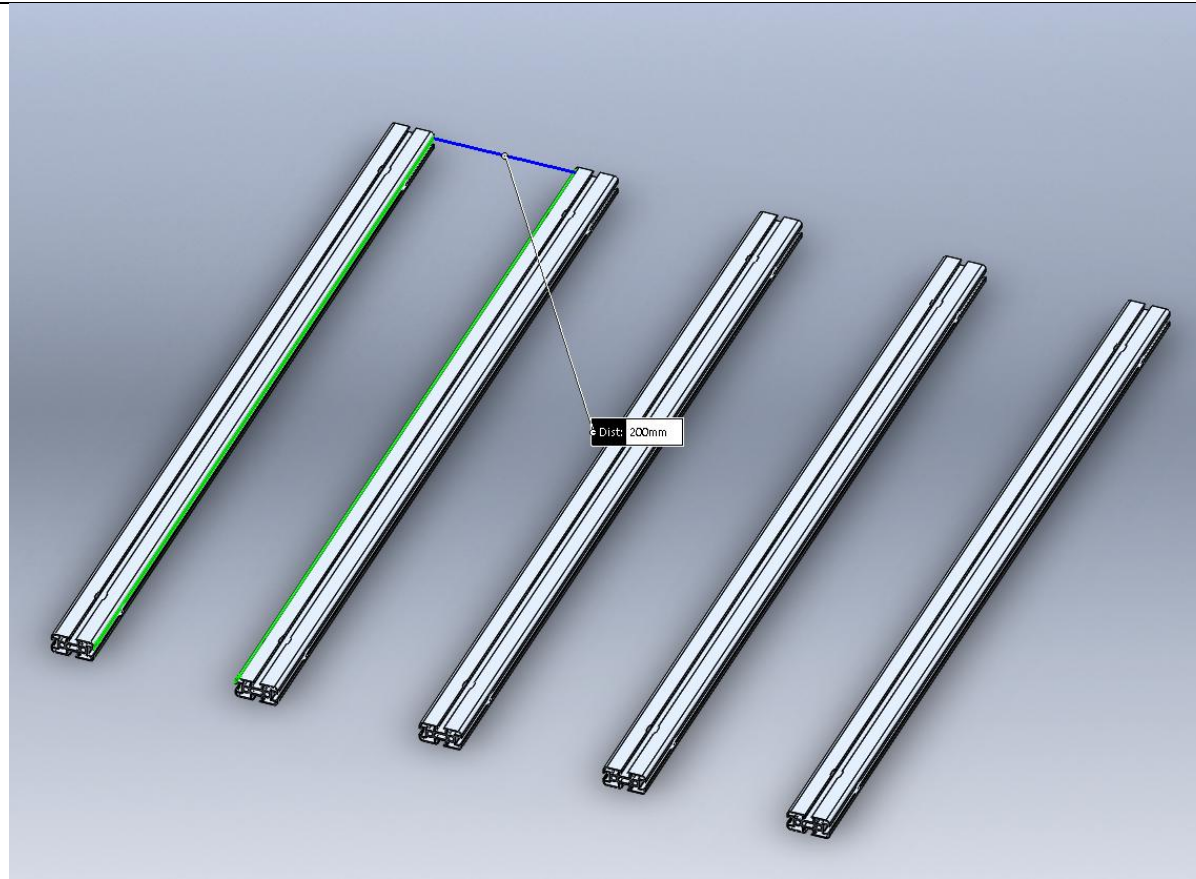
The following tools will be required to install the product.

Hand Tools	Power Tools	Workshop Supplies
Metric Socket Set 8-19mm Socket Extension Bar Metric Spanner Set 10-19mm Hex (Allen) Key Set 4-6mm Box Cutter or side cutters Trim tool or flat head screw driver		Soft Blanket Adhesive silicone Isopropyl Alcohol

WORKSHOP SAFETY

It is the responsibility of the installer to always complete works in a safe manner. Make sure the following safety equipment is available and precautions are observed whilst fitting this product.

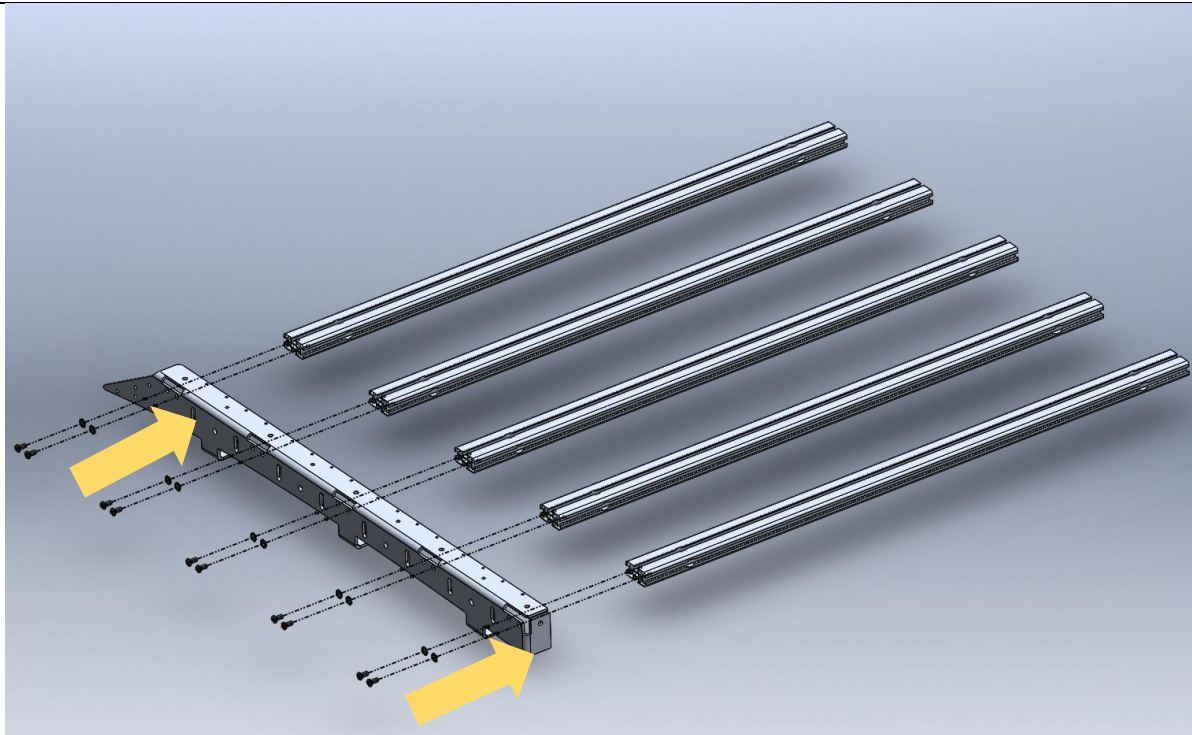
Hearing Protection 	Always wear ear protection when using power tools.
Eye Protection 	Ensure eye protection is always worn when cutting or drilling.
Manual Handling 	Do not attempt to lift bar assemblies or rock sliders on your own. Always use two people to lift or use mechanical Lifting aid such as hydraulic lifting trolley.
Vehicle Support 	Always ensure vehicle is properly supported when working on it. Do not attempt to fit products whilst suspension work is being carried out. Do not work under a vehicle supported only by a jack.



1. First thing is to Assemble the roof rack. Start by setting out the 5 extrusions on a table. Position them so they sit approximately 240mm apart.

TOOLS REQUIRED

FASTENERS



2. Fit the side rail to the extrusion.

This is easiest to do when the ends of the extrusions are hanging over the edge of a table / workbench. Leave all these bolts loose at the moment

3. Secure using M8x16 Button Head bolts through the side face into the Tapped holes on the side face of the extrusion.

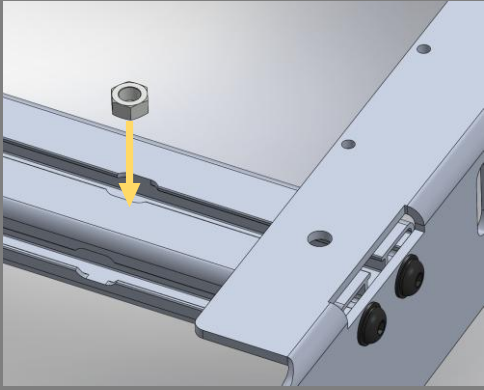
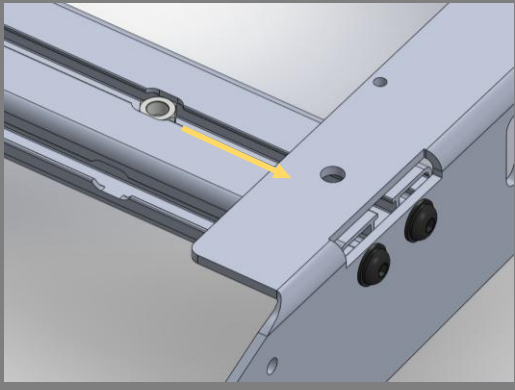
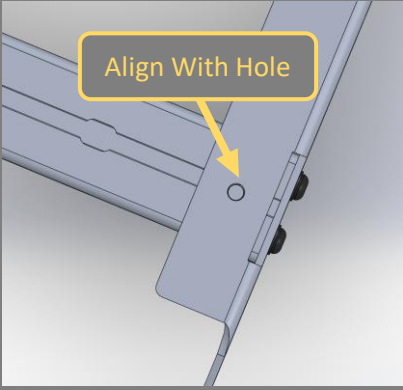
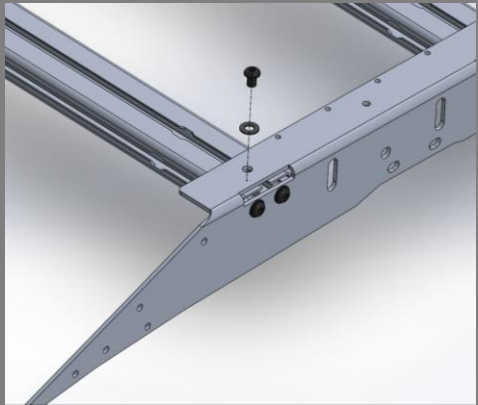
4. Complete steps 2 through 3 for the other side of the rack assembly to fit the other side rail.

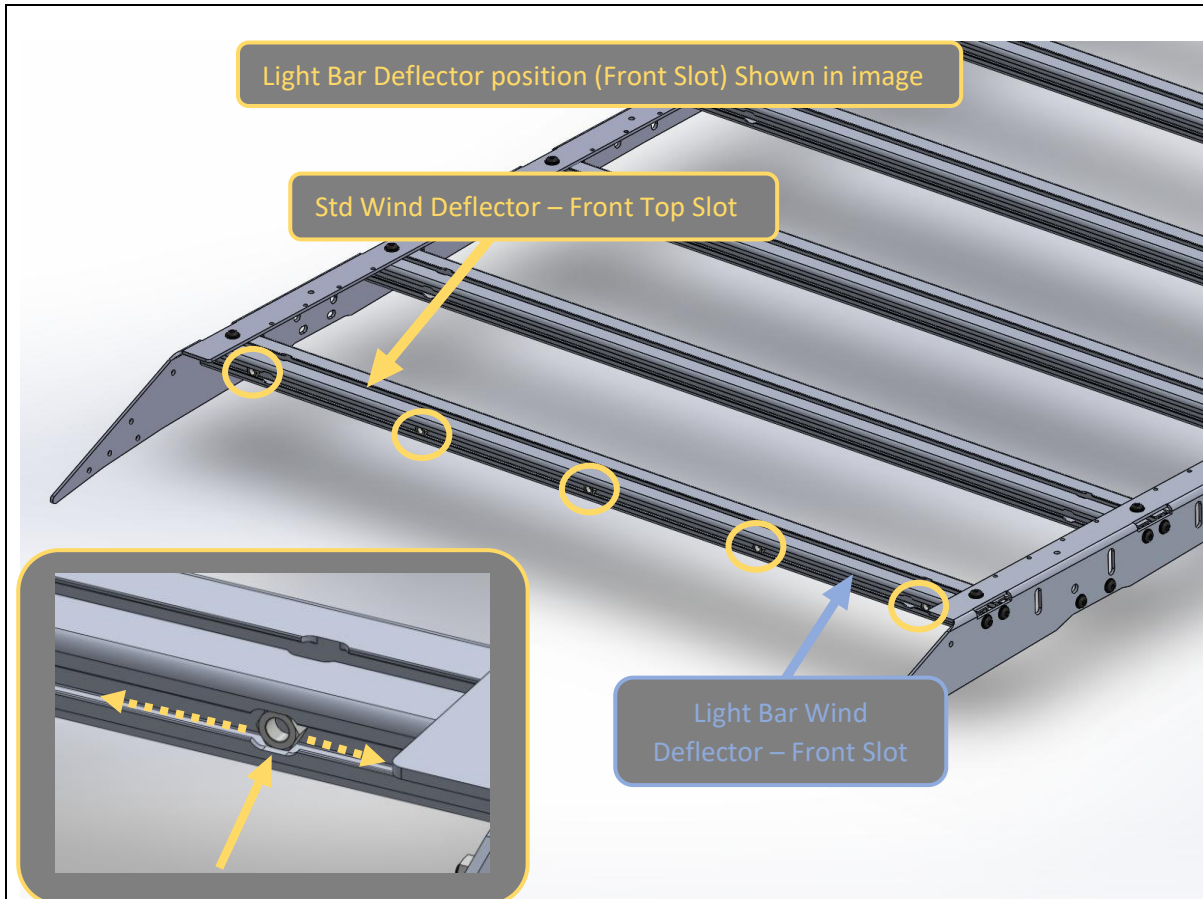
TOOLS REQUIRED

5mm Hex Key

FASTENERS

10x M8x16 Button head bolt.
10x M8 Flat Washer

	
	
<ol style="list-style-type: none"> 5. Insert M8 Nut into each track for securing top face of side rail. 6. Drop nut into slot in extrusion, then slide nut sideways in slot and align with hole in the side rail. 7. Secure with M8x12 Bolt + Flat Washer. 8. Complete steps 5 through 7 for the other side of the rack assembly to fit the other side rail leaving all bolts loose at the moment. 	<p>TOOLS REQUIRED</p> <p>5mm Allen Key</p>
	<p>FASTENERS</p> <p>5x M8 Nuts 5x M8x12 Button head bolt 5x M8 Black Washer</p> <p>Per Side</p>



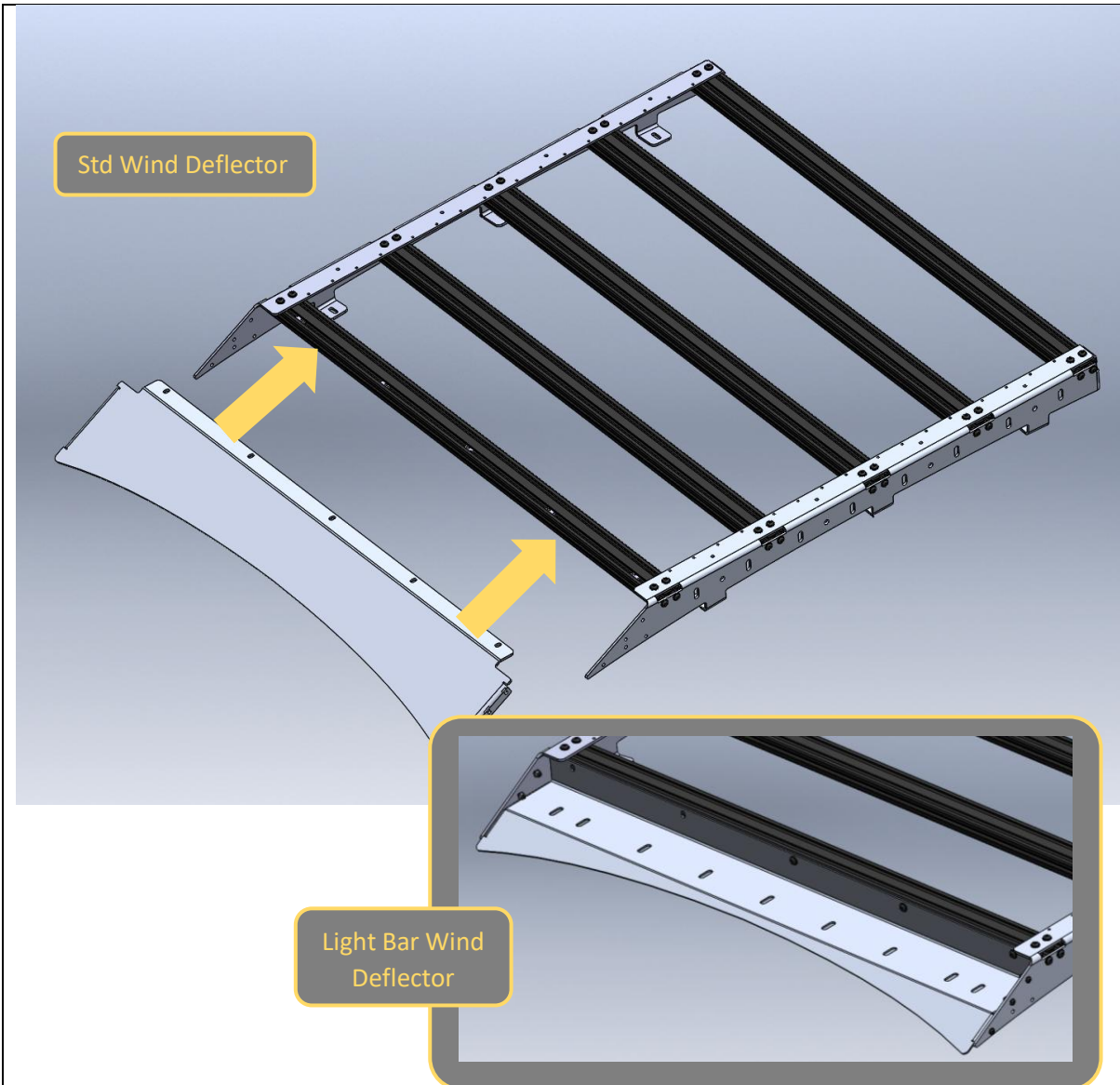
9. If fitting the standard wind deflector fit the 5x M8 in nuts to the top front slot of the front most extrusion member.
10. Move nuts side to side using screwdriver to move nuts into correct positions. The spring detent should hold the nut in position.
11. If fitting the optional light bar wind deflector, fit the drop in nuts to the front slot of the front first extrusion member.

TOOLS REQUIRED

Screwdriver

FASTENERS

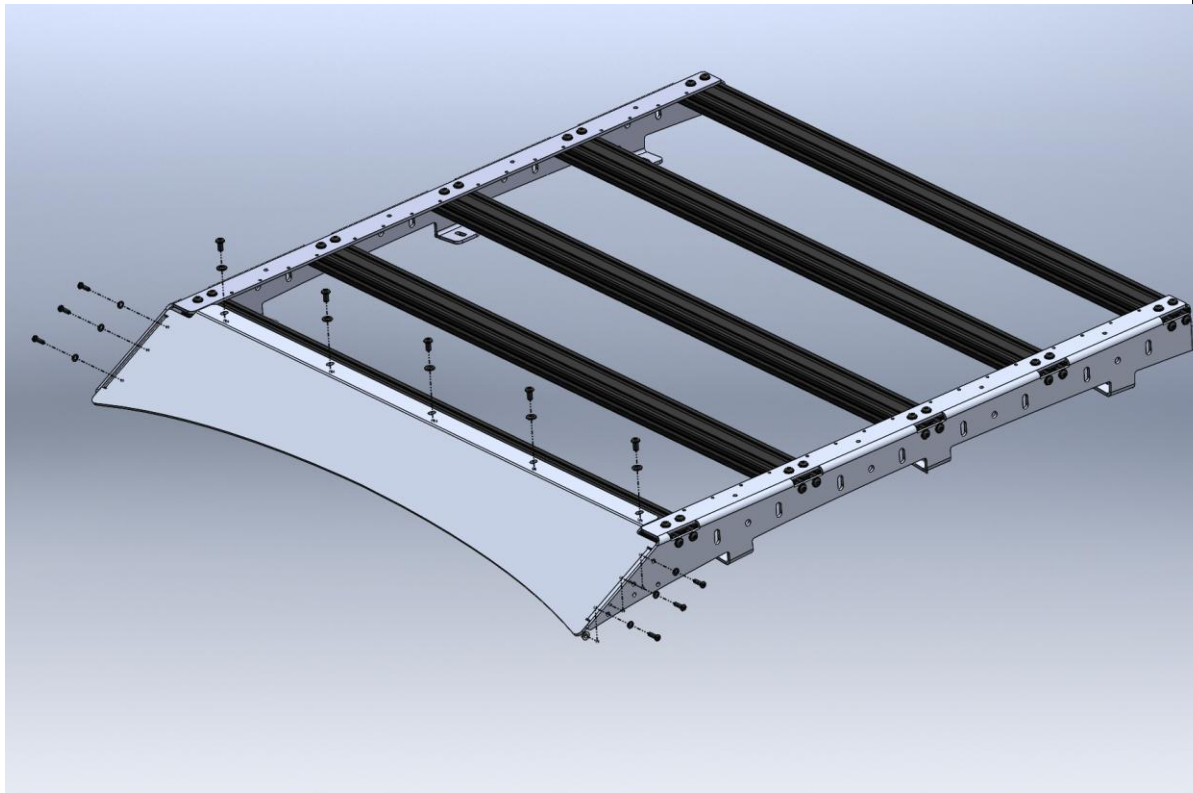
5x M8 Nuts



12. Fit the wind deflector to the rack assembly. The deflector should sit inside the side rails and on top of (Standard type) or in front (Light bar type) the first extrusion member. Leave the wind deflector bolts loose at the moment.

TOOLS REQUIRED

FASTENERS



13. Secure the wind deflector to the extrusion with M8x16 button head bolts and Flat washers into the nuts in the front extrusion.

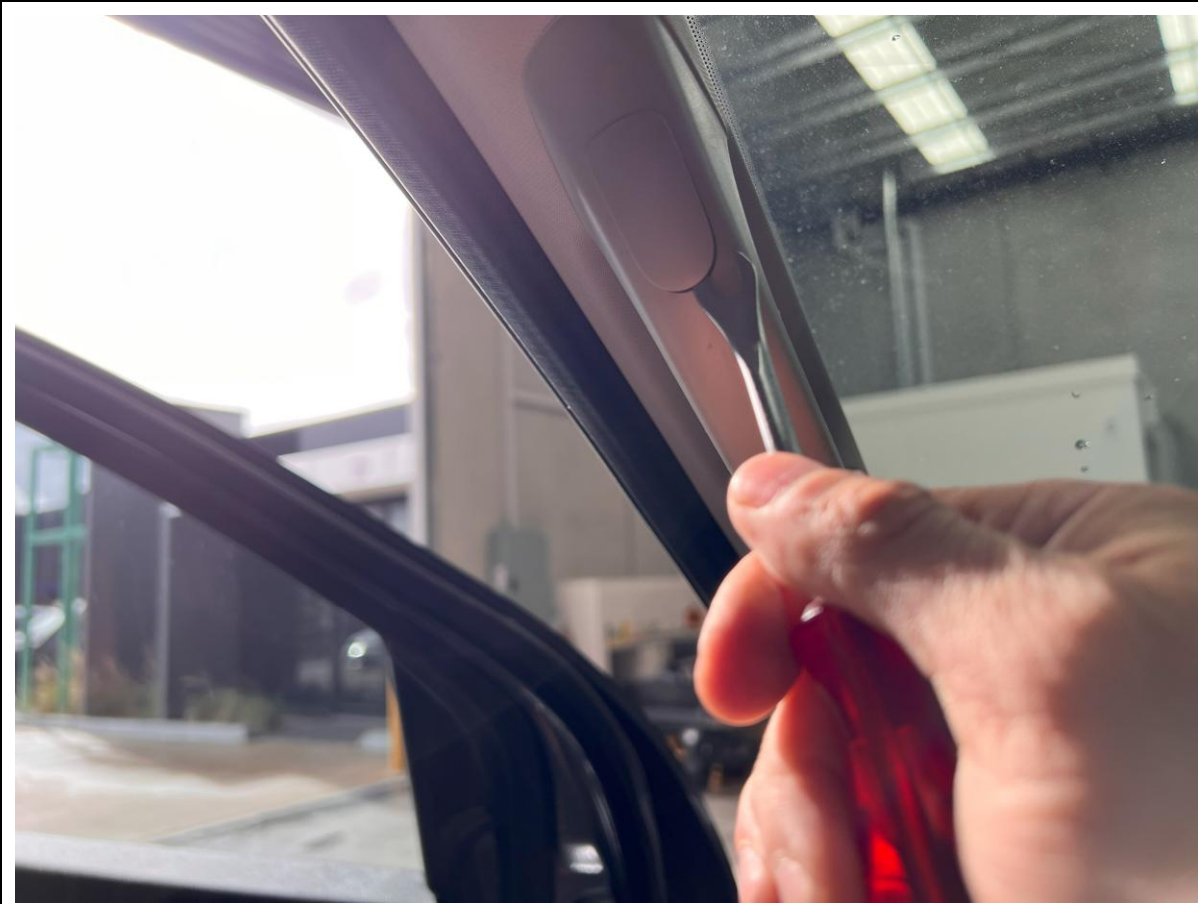
14. You can leave the Side M6 bolts off for now

TOOLS REQUIRED

5mm Hex Key

FASTENERS

5x M8x16 Button head bolt
5x M8 Flat Washer



The headliner needs to be dropped in order to install the roof rack mounting brackets.

Retain all fasteners for re-assembly.

15. Start with the grab handles in the front seats on the A pillar. Remove both by using a trim tool or flat head screwdriver to remove the cover for each screw, then remove each screw with a 6mm Socket

TOOLS REQUIRED

6mm Socket
Flat head screw driver or trim tool

FASTENERS



16. Next is to remove the sun visors.

17. Start with the retaining clip side and peel back the screw cover with a trim tool or flat screwdriver.

18. Then Remove screw with T20 torx bit.

TOOLS REQUIRED

Flat head screw driver or trim tool
T20 Torx bit

FASTENERS



19. Using Trim tool or screwdriver, peel cover from inside of car and with split line in middle pull cover away from visor.
20. Remove 2 screws per visor with T20 Torx bit and then remove sun visor. Repeat for other side.

TOOLS REQUIRED

Flat Head screw driver/ Trim tool
T20 Torx bit

FASTENERS



21. Remove A pillar trim by gently tugging from the top of the panel.
22. Take care with wire in the bottom connected to speaker.

TOOLS REQUIRED

FASTENERS



23. Unplug the harness for the speaker and remove the trim panel.

24. Repeat for other side.

TOOLS REQUIRED

FASTENERS



25. Using trim tool peel covers from inside of grab handle to reveal screws.
26. Remove screws with T30 Torx bit.
27. Remove handle.
28. Repeat for other side.

TOOLS REQUIRED

Trim Tool/ Flat head screwdriver
T30 Torx bit

FASTENERS



29. Open Sunglasses holder and gently pull console down from rear, then move your hands to the middle once the back clips give and pull from the middle.

30. Unplug all electrical harnesses.

31. Remove Top console.

TOOLS REQUIRED

FASTENERS



32. Using a T20 torx bit remove 2 screws shown.

TOOLS REQUIRED

T20 Torx bit

FASTENERS



33. Pop top seatbelt cover off to reveal bolt.

34. Use a T50 Torx bit to remove the front seat belt bolt. Let the seatbelt hang.

35. Remove Handle right behind seat belts with 6mm socket.

36. Repeat for other side.

TOOLS REQUIRED

Flat Head screw driver/ Trim tool
T50 Torx bit
6mm Socket

FASTENERS



37. Remove rear handles above head as per the front.

38. Repeat for other side.

TOOLS REQUIRED

Flat Head screw driver/ Trim tool
T30 Torx bit

FASTENERS



39. Grab top of B Pillar trim and release clips holding it in place.
40. Work your way down the top panel till all clips are released.
41. Release top clips for bottom panel which overlaps the top.
42. Remove top B pillar panel.
43. Repeat for other side.

TOOLS REQUIRED

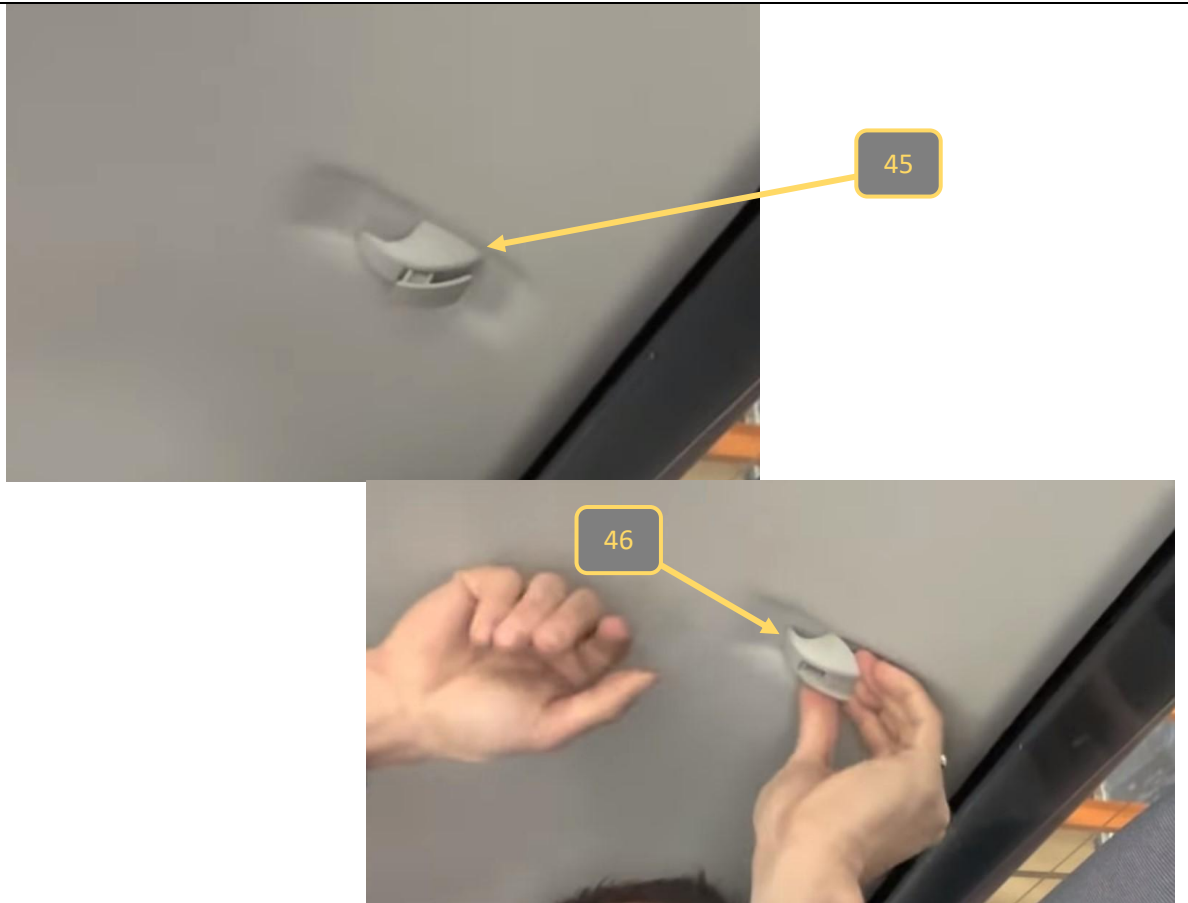
FASTENERS



44. Peel rubber seal from sides and top of each 4 doors.

TOOLS REQUIRED

FASTENERS



45. Using Trim tool or flat head screwdriver to release retaining clip for rear hooks, remove retaining clip.

46. Remove hook by rotating forward and pulling down.

47. Repeat for other side.

TOOLS REQUIRED

Flat Head screwdriver/ Trim tool

FASTENERS



48. Fold rear seat back down.

49. Using trim tool or flathead screwdriver release the top cap on the rear seat belts then lift off.

TOOLS REQUIRED

Flat Head screwdriver/ Trim tool

FASTENERS



50. Using T25 Torx bit, remove both rear rubber bump stops

TOOLS REQUIRED

T25 Torx bit

FASTENERS



51. Peel and unclip centre seat belt cover by pulling top away from the rear bulkhead.

TOOLS REQUIRED

FASTENERS



52. Remove rear trim panel just below window.
Grab one side and work your way to the other
gently pulling to release all the clips.

TOOLS REQUIRED

FASTENERS



53. Time to remove the outside trim panels, start with the lower one and peel just the top away.

TOOLS REQUIRED

FASTENERS

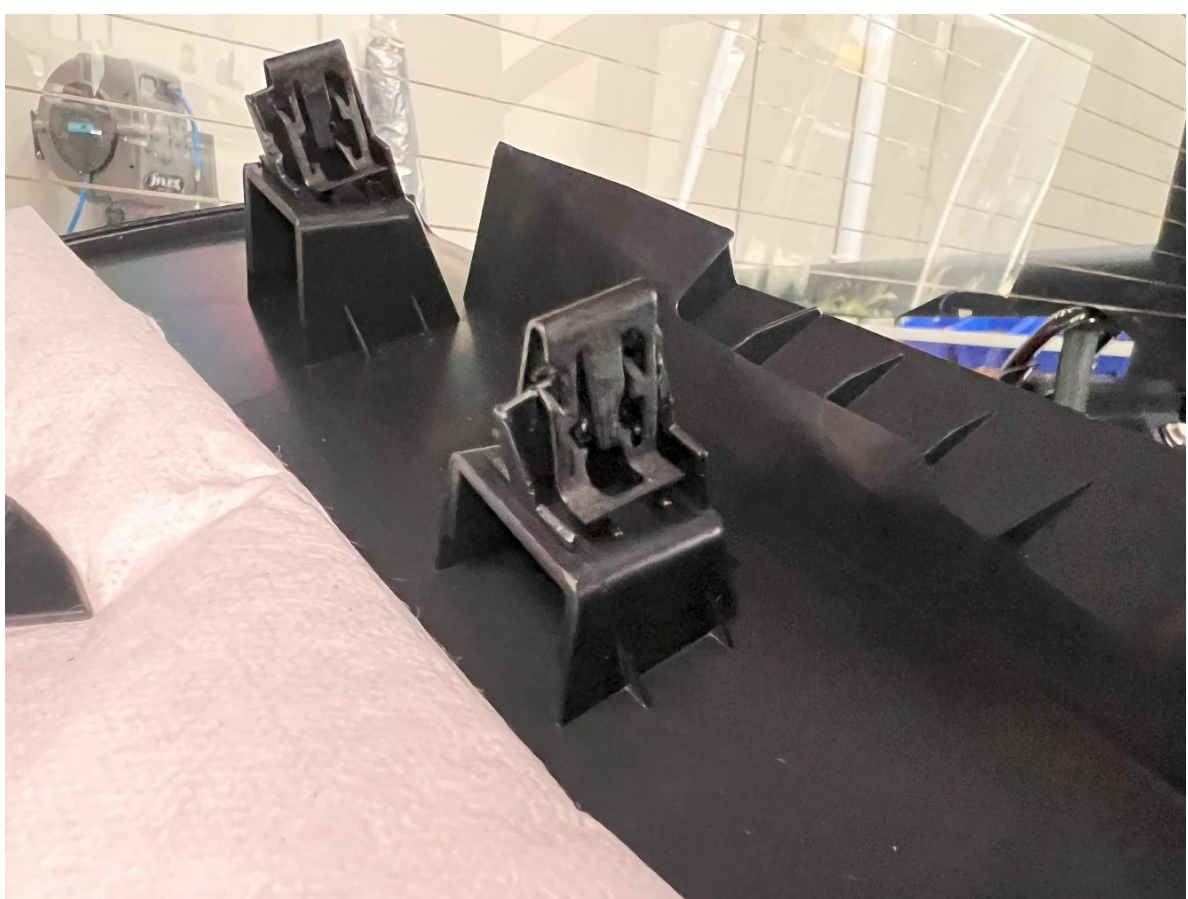


54. Remove the outside upper trim panel by pulling from the top and working your way down.

55. Repeat for the other side.

TOOLS REQUIRED

FASTENERS



56. It's very likely that the top 2 metal clips that hold the panel into the side of the car will come off the panel and stay in the side wall of the vehicle.

Remove them from the vehicle and reinstall them back on the panel.

You may need pliers to remove them from the side of the vehicle.

TOOLS REQUIRED

Pliers

FASTENERS



57. Use a friend to help with this next step.
58. Both of you reach in and at the same time pull the headliner down to release it from the magnet.
- Take extra care not to crease or bend the headliner as it's fragile.

TOOLS REQUIRED

FASTENERS



59. Take extra care around curtain airbags and do not damage them.
60. Remove nut in the front on the car just behind the curtain airbag near the windscreen with an 8mm socket, repeat for other side.
61. Remove nut at rear of roof near back wall with 8mm socket, repeat for other side.

TOOLS REQUIRED

8mm socket

FASTENERS



62. Using a plastic trim tool peel rear edge of rubber trim off only up to the stud where you just removed the nut.

63. Repeat for other side.

TOOLS REQUIRED

Plastic Trim tool or screwdriver with rag to protect paintwork

FASTENERS



64. Place rear bracket on roof as shown and line up rear stud with centre of mounting slot.
65. Mark 20mm in front of the front edge of bracket

TOOLS REQUIRED

FASTENERS



66. Using side cutters or a box cutter trim the rubber trim at the marked location.

Take care not to cut into the roof or damage the paint. Rubber trim does have a metal wire core.

67. Scrape all double-sided tape in the ditch.

68. Repeat for other side.

TOOLS REQUIRED

Side Cutters or box cutter

FASTENERS



69. Replace cut trim piece on roof and line up rear bracket with mounting slot over the hole and measure back on the rubber 15mm back towards the back of the car.

70. Cut the rubber trim at this new location.

71. Repeat for other side.

TOOLS REQUIRED

Side Cutters or box cutter

FASTENERS



72. Move to the front of the car and using plastic trim tool remove the front edge of the rubber trim up to the stud again like the rear.

TOOLS REQUIRED

Plastic Trim tool or screwdriver with rag to protect paintwork

FASTENERS



73. Place front bracket as shown above with mounting slot over the hole in the roof.
74. Mark 15-20mm behind the rear most point of bracket and trim rubber trim off at this point.
75. Scrape off all double-sided tape in the ditch.

TOOLS REQUIRED

Side Cutters or box cutter

FASTENERS



76. Place a soft blanket over the roof to protect it while lifting the roof rack on.

TOOLS REQUIRED

FASTENERS



77. Using a cleaning solvent like isopropyl alcohol gives all the exposed ditch areas a good clean.

TOOLS REQUIRED

FASTENERS



78. Starting at the front RHS of vehicle spread a good quality adhesive silicone around the mounting slot in the ditch.

TOOLS REQUIRED

RTV or Adhesive Silicone

FASTENERS



79. Place bracket as shown with M10 x 20 Hex bolt, washer on top and secure underneath with M10 flat washer and nyloc nut. Tighten bolt till it's just tight then back it off so you can move the bracket once the rack is on.

80. Use the 17mm socket to hold the nut and washer on the inside while you thread it on.

81. Repeat of other side.

TOOLS REQUIRED

16 or 17mm spanner (depending on supplier of bolt)
17mm socket

FASTENERS

2x M10 x20 Bolt
4x M10 Flat washer
2x M10 Nyloc nut



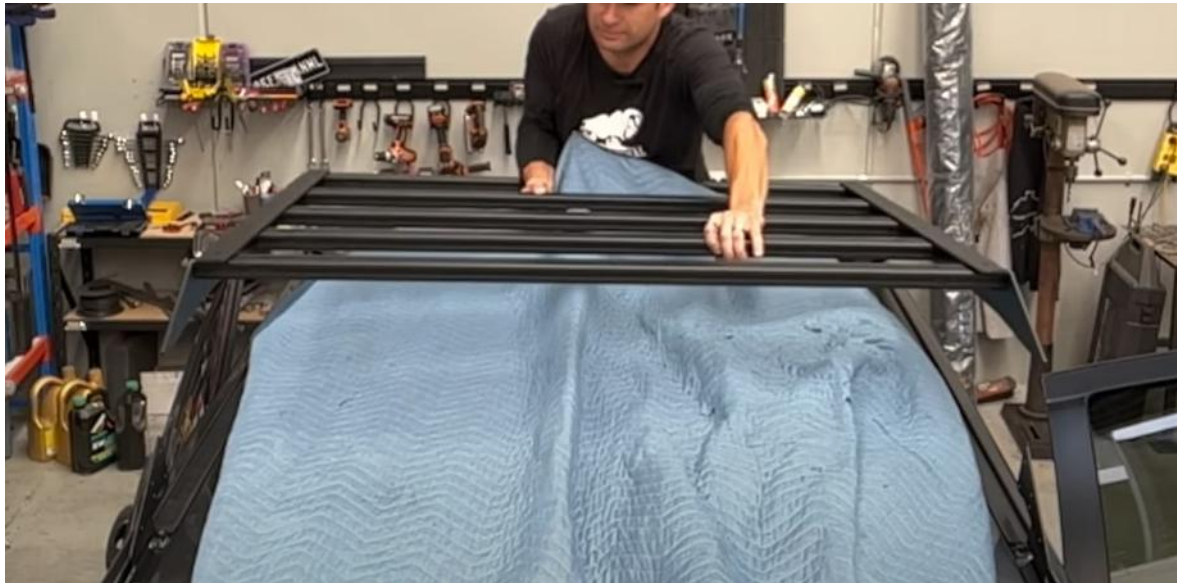
82. Repeat steps 78-81 for the rear brackets and fit as shown.

TOOLS REQUIRED

RTV or Adhesive Silicone
16 or 17mm spanner (depending on
supplier of bolt)
17mm socket

FASTENERS

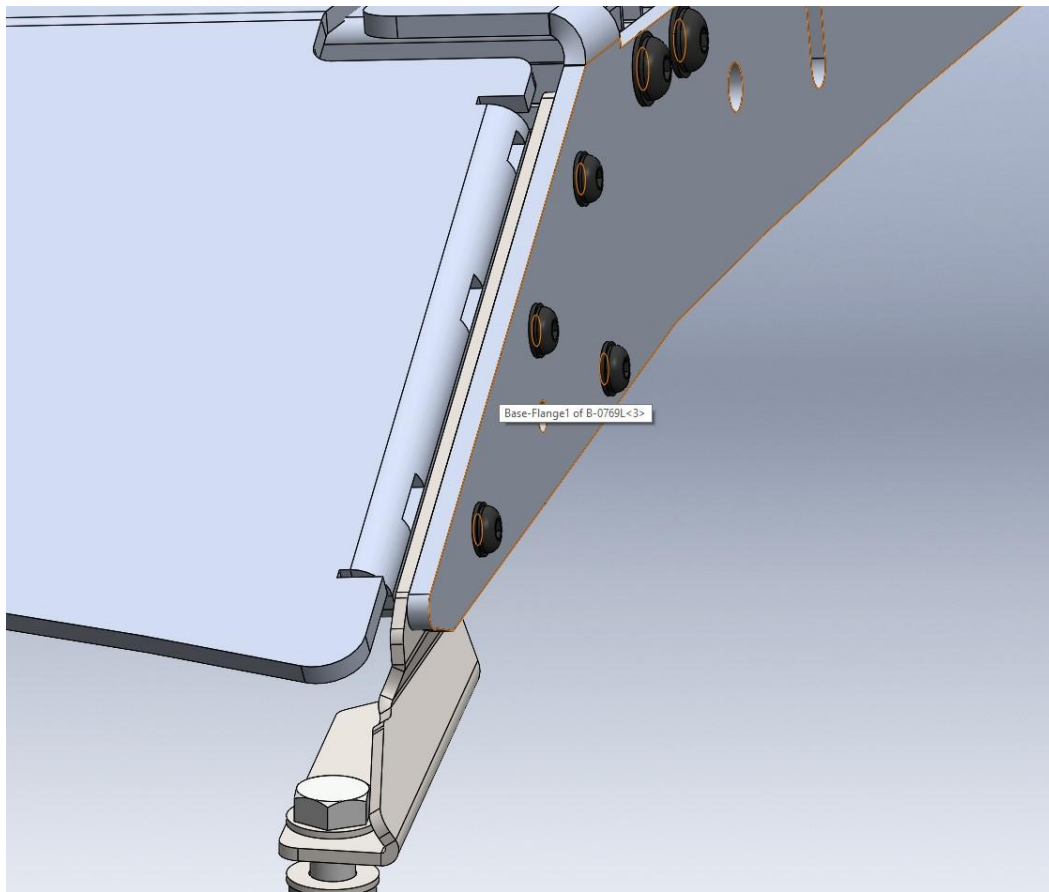
2x M10 x20 Bolt
4x M10 Flat washer
2x M10 Nyloc nut



83. Lift the roof rack on the roof and the rack sides go outside the brackets you just mounted.

TOOLS REQUIRED

FASTENERS



84. As you left all the bolts loose when putting the roof rack together you can now slide the bracket between the wind deflector and the side arm.

85. Secure the wind deflector to the side rails with M6x25 button head bolts, Flat washers, and flange nuts.

86. If you find it tough to get the M6 bolts through the 3 layers loosen the M10 nyloc more so you can push the bolt through all 3 layers.

87. Leave screws hand tight for now.

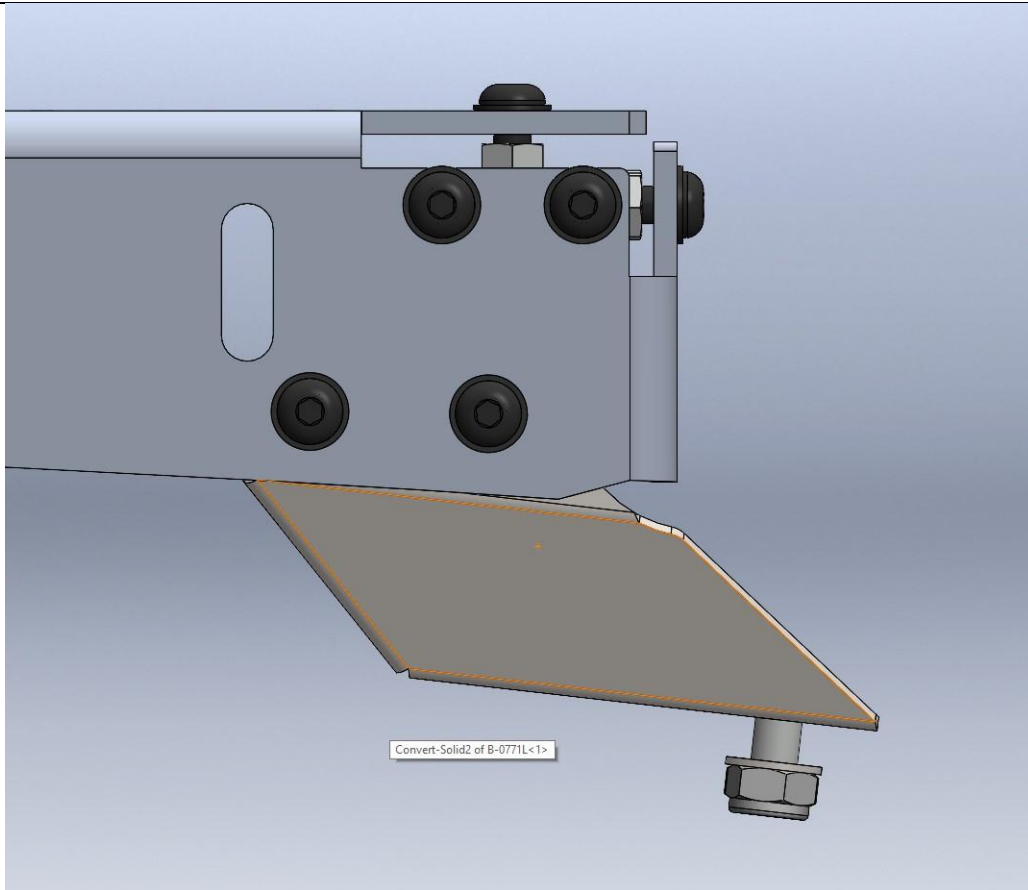
88. Repeat for other side.

TOOLS REQUIRED

4mm Hex Key

FASTENERS

8x M6x20 Button head bolt.
8x M6 Flat Washer
8x M6 Flange Nut



89. Once all the bolts are through the front bracket put 2x M8x20 Button head cap screws through rear bracket with washers and flange nuts.
90. Repeat for other side.
91. Once all the bolts are in, you can now go through and torque all the bolts on the roof and roof rack. Make sure you get them all.
92. Time to put the roof lining back in.
93. Start at step 58 and do these instructions in reverse.

TOOLS REQUIRED

4mm Hex key
5mm Hex key
16 or 17mm spanner
17mm socket

FASTENERS

4 x M8 x 20 BHCS
4 X M8 FW
4 X M8 FN



94. Lucky last step, make sure you put on the logo plates on bad luck will befall you for the next year.

TOOLS REQUIRED

FASTENERS



95. You're done, go out and enjoy your Roof rack

For contact details see www.offroadanimal.com.au